



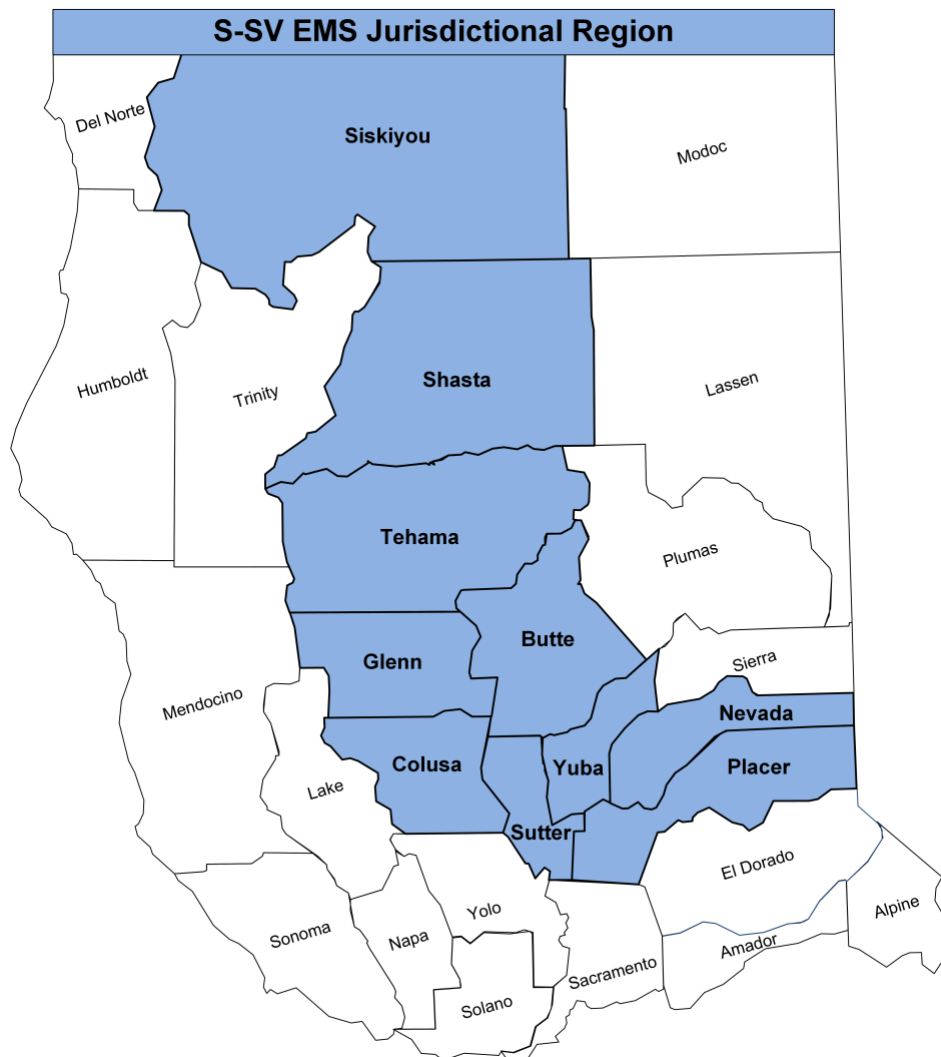
S-SV Emergency Medical Services Agency

Butte, Colusa, Glenn, Nevada, Placer, Shasta, Siskiyou,
Sutter, Tehama, & Yuba Counties



Sierra – Sacramento Valley Emergency Medical Services Agency (S-SV EMS) Overview

(Updated 01/2025)





S-SV EMS Overview (Updated January 2025)

About S-SV EMS

S-SV EMS serves as the local emergency medical services agency (LEMSA) for Butte, Colusa, Glenn, Nevada, Placer, Shasta, Siskiyou, Sutter, Tehama, and Yuba counties. S-SV EMS was established as a multi-county government Joint Powers Authority (JPA) in 1975 and functions pursuant to California Health and Safety Code, Div. 2.5, § 1797.200. The 10 county S-SV EMS region encompasses 22,000+ square miles, ranging from remote frontier/rural areas to large urban centers, and has a static population of approximately 1,240,171 according to April 2024 State of California Department of Finance Population Estimates. The S-SV EMS region also experiences a significant influx of visitors and non-residents throughout the year, estimated at 2,000,000+ annually.

S-SV EMS Updates

During the past two (2) years, S-SV EMS has made the following changes to respond to EMS system needs and ensure that the care provided throughout our EMS region is equitable, person centered and consistent with best practices/evidence-based medicine:

- Established and facilitated a new EMS field personnel Prehospital Advisory Committee (PAC).
- Significantly revised our Regional Emergency Medical Advisory Committee (REMAC) process.
- Renumbered, reorganized and updated all pediatric patient treatment protocols.
- Developed and implemented several new patient treatment protocols.
- Transitioned several field policies to patient treatment protocol format.
- Developed and implemented a new Multiple Patient Incident protocol and significantly revised/updated our Regional Multiple-Casualty Incident (MCI) plan.
- Implemented new and/or required prehospital EMS medications/equipment.
- Required additional EMS field personnel education/training.
- Assisted in the development, approval and implementation of a new community college paramedic training program within our EMS region.
- Became a member of the National EMS Quality Alliance (NEMSQA) and participated in the NEMSQA EMS Quality Improvement Partnership Airway Management Collaborative.
- Developed and implemented a new local EMS data system schematron and made multiple other EMS data system improvements.
- Developed and implemented a new consolidated specialty patient data registry.
- Facilitated and assisted with significant revisions/modernization of the S-SV EMS website.
- Facilitated and assisted with the development of new android and apple mobile applications that provide significantly expanded tools/resources to EMS field personnel.
- Facilitated and assisted with the development of a new online license management system to provide better support to the 5000+ S-SV EMS certified/authorized/accredited EMS personnel.
- Implemented a new online learning management system to provide better support to the thousands of individuals who complete S-SV EMS developed online education/training courses each year.
- Hired an additional full-time paramedic EMS Specialist position in January 2025 to support the ongoing/increasing needs of S-SV EMS system participants, member counties, and the public.
- Held additional regional and statewide EMS and disaster committee leadership roles.
- Presented at several local, regional, state and national EMS/disaster preparedness seminars.



S-SV EMS Overview (Updated January 2025)

S-SV EMS Governance & Responsibilities

The S-SV EMS JPA Governing Board is comprised of publicly elected supervisors from each member county, and is responsible for planning, development, implementation, and oversight of all EMS system components/functions within the 10-county S-SV EMS jurisdictional region, including:

- Ensuring compliance with all local and state EMS statues/regulations.
- Local EMS system design and oversight:
 - Lay rescuer automated external defibrillator (AED) programs.
 - EMS dispatch centers.
 - EMS components of law enforcement (LE) & fire department (FD) public safety organizations.
 - EMS ground and air transport providers (including contracting/permitting activities).
 - Specialty EMS programs (tactical EMS, fireline EMS, etc.).
 - Implementation and maintenance of specialty systems of care (STEMI, stroke, trauma).
 - Designation of EMS base hospitals and specialty receiving centers (STEMI, stroke, trauma).
- Approval, review, and monitoring of EMS training programs.
- Certification/accreditation, oversight, and enforcement activities for all prehospital care personnel.
- Development, implementation, and maintenance of county/regional EMS system plans.
- Development, implementation, and maintenance of EMS system policies & treatment protocols.
- EMS system quality management (quality assurance/quality improvement) activities.
- Medical and health disaster planning/response, in collaboration with local public health, regional, and statewide medical/health system entities (CAL OES, EMSA, CDPH, DHCS).
- EMS data collection/review/validation and public education activities.

EMS Training Programs & EMS Personnel

| EMS Personnel Level | Minimum Required Training Hours | # of S-SV EMS Approved/Monitored Training Programs | # of EMS Personnel in the S-SV EMS Region | Notes |
|---|---------------------------------|--|---|---|
| Public Safety First Aid (PSFA) | 24 hours | 25 | 1000+ | Minimum training for lifeguards, LE, and FD personnel |
| Emergency Medical Responder (EMR) | 48 – 60 hours | 16 | 300 | Basic Life Support (BLS) |
| Emergency Medical Technician (EMT) | 170 hours | 9 | 3600 | Basic Life Support (BLS) |
| Advanced EMT (AEMT) | EMT Certification +160 hours | 2 | 25 | Limited Advanced Life Support (LALS) |
| Paramedic | EMT Certification +1094 hours | 4 | 1200 | Advanced Life Support (ALS) |



S-SV EMS System Participants

S-SV EMS staff work collaboratively with multiple public and private EMS system participants to ensure the ongoing provision of coordinated, professional, competent, consistent, and equitable EMS care for all residents and visitors throughout the S-SV EMS region and surrounding areas, regardless of the patient's location or socioeconomic status. A summary of the S-SV EMS system participants is included below.



- **22** – 911 Public Safety Answering Point (PSAP) dispatch centers (many providing S-SV EMS approved emergency medical dispatch services)
- **3** – Public (CAL FIRE) air ambulance coordination centers
- **7** – Private EMS provider ground and/or air ambulance dispatch centers



- Multiple law enforcement agencies, many providing S-SV EMS approved optional/enhanced EMS services (AED utilization for cardiac arrest patients, naloxone administration for opioid/narcotic overdose patients, tactical EMS, etc.)



- **100** – Basic life support (BLS), limited advanced life support (LALS), and/or advanced life support (ALS) fire department first responder organizations, many providing S-SV EMS approved optional/enhanced EMS services



- **23** – 911 ground ambulance providers (9 public, 14 private)
- **15** – Interfacility, medical transport, special event ground ambulance providers
- **375** – Ground ambulance vehicles



- **5** – Air ambulance providers (8 total helicopter aircraft/bases)
- **1** – ALS air rescue provider (2 total helicopter aircraft/bases)
- **2** – BLS air rescue providers (2 total helicopter aircraft/bases)

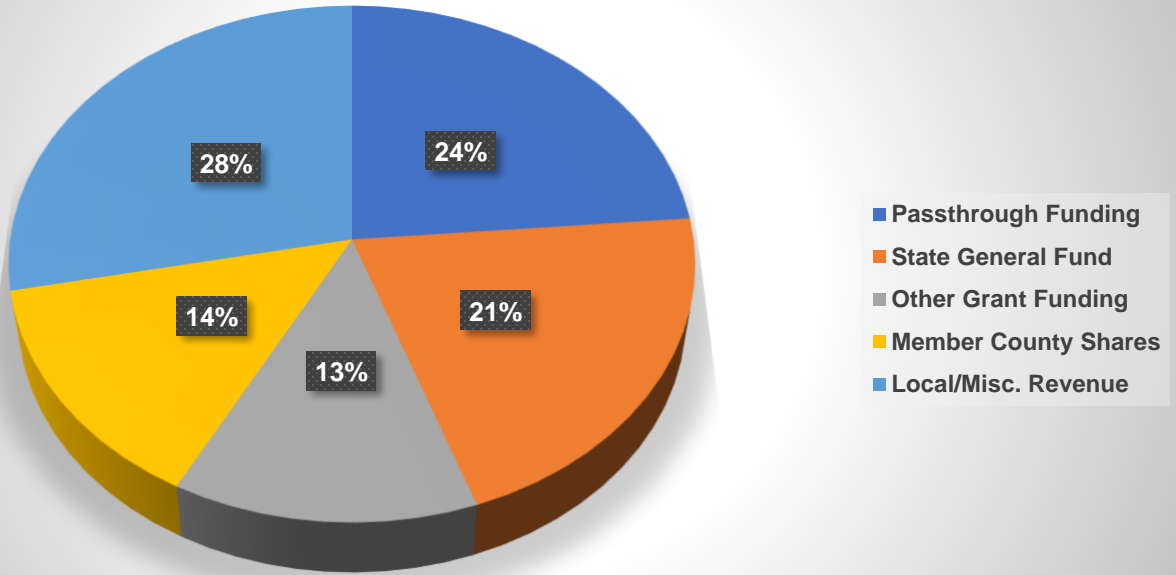


- **17** – Acute care hospitals (including 6 - critical access hospitals, 6 - S-SV EMS designated STEMI receiving centers, 13 - S-SV EMS designated stroke receiving centers, and 8 - S-SV EMS designated Level 2, 3 & 4 trauma centers)

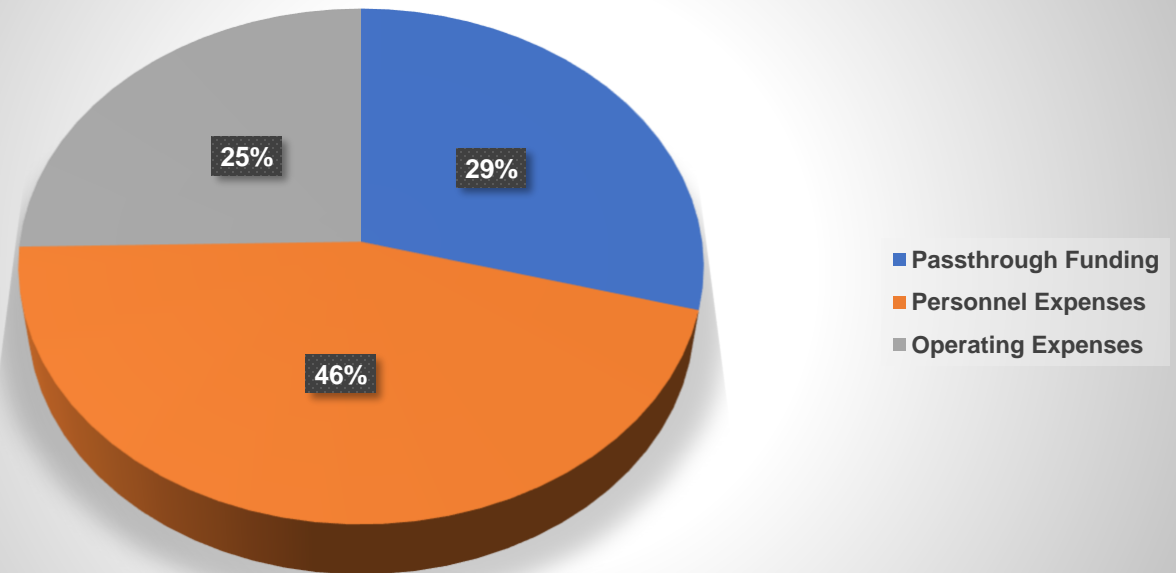


S-SV EMS Budget

S-SV EMS Agency Revenue Sources (FY 2024/2025 budget)



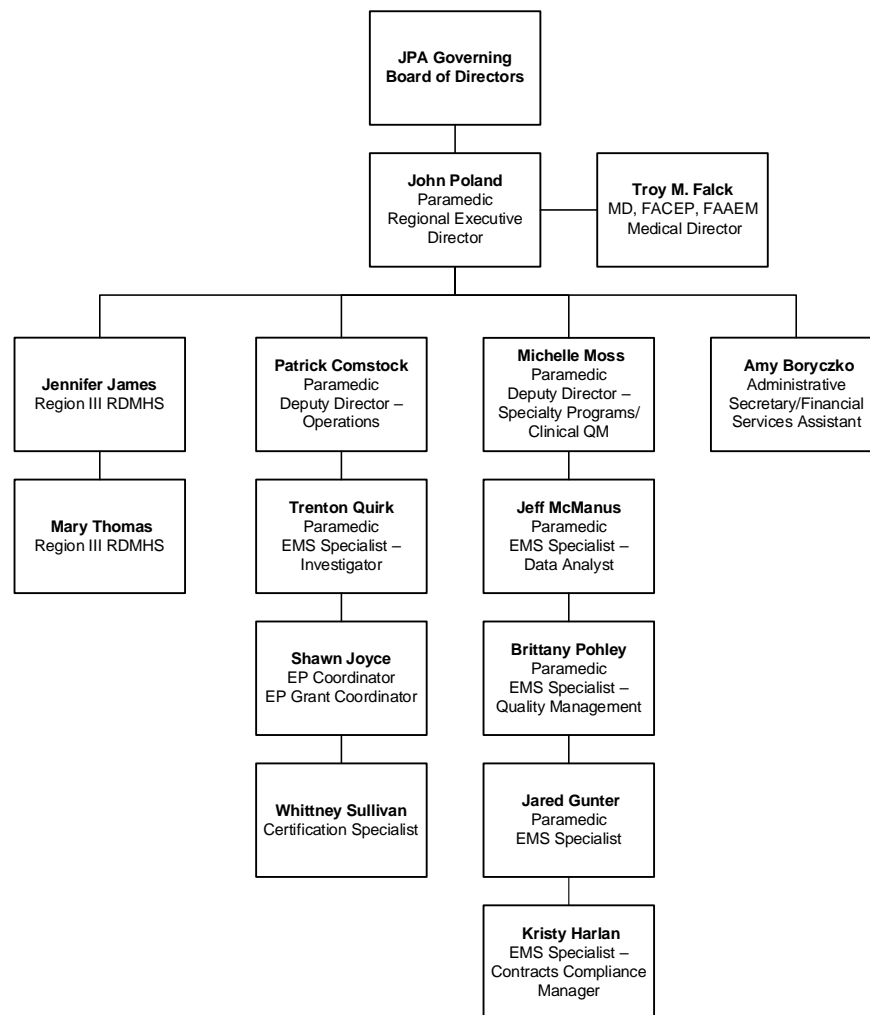
S-SV EMS Agency Expenditures (FY 2024/2025 budget)





S-SV EMS Overview (Updated January 2025)

S-SV EMS Organizational Chart & Leadership Staff Responsibilities



S-SV EMS Leadership Staff Primary Responsibilities

- **Regional Executive Director:** Responsible for overall S-SV EMS Agency administration, including the discharge of all LEMSA responsibilities pursuant to California Health and Safety Code, California Code of Regulations, and other applicable EMS laws, regulations, policies, and procedures.
- **Medical Director:** Responsible for medical control, direction and oversight of the S-SV EMS system and all EMS personnel within the S-SV EMS region. Assists in the development and approval of all S-SV EMS policies and treatment protocols.
- **Deputy Director – Operations:** Assists the Regional Executive Director and Medical Director with management/oversight of S-SV EMS operational activities/responsibilities.
- **Deputy Director – Specialty Programs/Clinical QM:** Assists the Regional Executive Director and Medical Director with management/oversight of S-SV EMS specialty programs (helicopter EMS, STEMI, stroke, trauma) and clinical quality management activities/responsibilities.



S-SV EMS Leadership Team



John Poland, Paramedic
Regional Executive Director
OES Region III Regional Disaster Medical Health Coordinator (RDMHC)

John has worked for the S-SV EMS Agency since 2009, including previous positions as Quality Improvement/Education Coordinator and Associate Regional Executive Director. John is a California licensed paramedic with 30+ years EMS experience, working in multiple field and management capacities for both public and private EMS organizations.



Troy M. Falck, MD, FACEP, FAAEM
Medical Director

Dr. Falck has been the Medical Director of the S-SV EMS Agency since 2008. Dr. Falck received his medical degree from the University of Washington and completed residencies with Loma Linda University Medical Center (General Surgery) and the University of California, Irvine Medical Center (Emergency Medicine). He has practiced Emergency Medicine in both the Sacramento and Roseville areas for the past 20+ years.



Patrick Comstock, Paramedic
Deputy Director – Operations

Patrick has worked for the S-SV EMS Agency since 2017, previously as the Quality Improvement Coordinator. Patrick previously worked fire-based EMS as a firefighter/paramedic. Patrick is a California licensed and nationally registered paramedic and has a bachelor's degree in finance as well as a master's degree in public administration.



Michelle Moss, Paramedic, FP-C, CSTR
Deputy Director – Specialty Programs/Clinical Quality Management

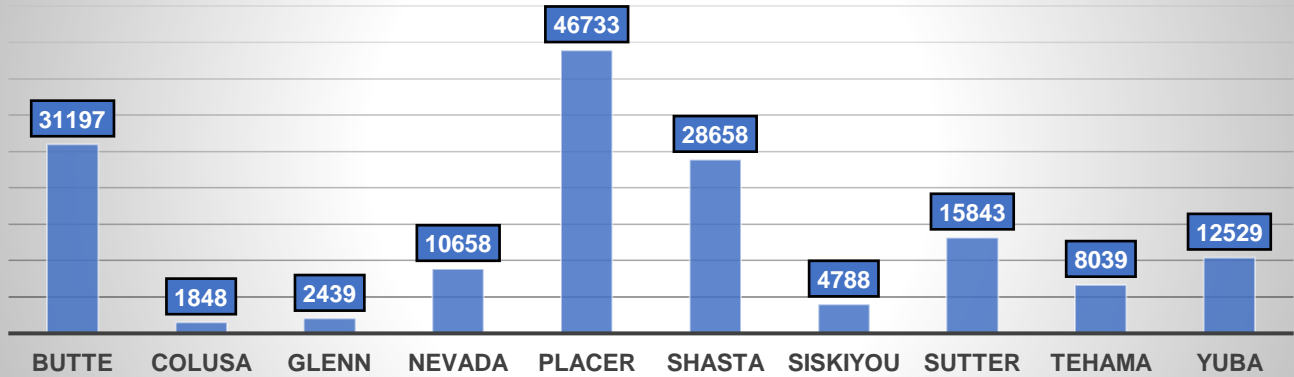
Michelle is a California licensed and nationally registered paramedic and flight paramedic. She has worked for the S-SV EMS Agency since 2016, previously as the Specialty Programs Manager. She has worked for 30 years as a critical-care paramedic, in the emergency department, EMS ground and air transport environments, and has held management/leadership positions for several public and private EMS and healthcare organizations.



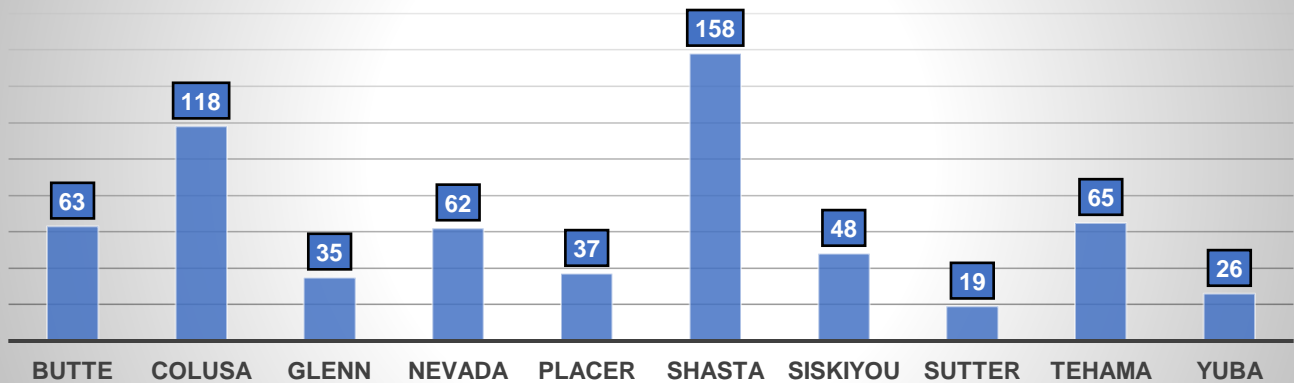
S-SV EMS Overview (Updated January 2025)

S-SV EMS System Data

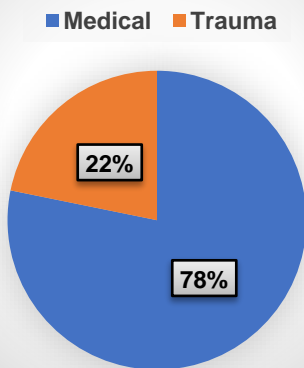
2024 Ground EMS 911 Patients By County (162,732 Total)



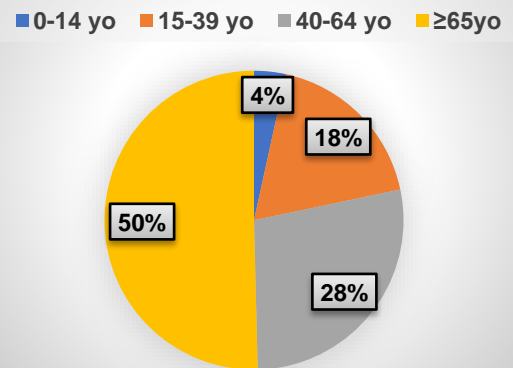
2024 EMS Aircraft 911 Patients By County (631 Total)



911 Patient Types



911 Patient Ages





S-SV EMS MCI/Disaster Preparedness/Response

As an integral part of the California disaster healthcare system, S-SV EMS staff work closely with multiple local, regional, state, and federal emergency management and medical/health entities to prepare for and respond to multi-casualty incident (MCI) and disaster events. In addition to the multiple MCIs occurring throughout the S-SV EMS region each year, notable events include:

- April 2014 Glenn County I-5 bus accident, involving 10 deaths and 30+ injured victims requiring EMS treatment and transport to 7 acute care hospitals in 5 counties using 14 ground and 7 air ambulances.
- February 2017 Lake Oroville Dam Spillway incident, involving the evacuation of 180,000+ residents, including several hospitals and other medical facilities. S-SV EMS staff worked closely with multiple public and private EMS system participants to facilitate the evacuation and transportation of 600+ medically fragile and 50+ acute care hospital patients to alternative medical facilities in 11 California counties.



The S-SV EMS region has also experienced an unprecedented number of large, destructive, and deadly wildfire incidents over the past several years, most of which have required significant initial and ongoing EMS response/coordination (ambulance strike teams, medical facility evacuations, evacuation shelter medical support, etc.) to assist with the medical/health needs of medically fragile individuals and other vulnerable populations. A listing of some of the largest wildfire incidents occurring within the S-SV EMS region over the past several years is included below.

| Wildfire Event | Year | California Historical Significance |
|-------------------|------|--|
| Camp | 2018 | #1 deadliest, #1 most destructive wildfire event |
| August Complex | 2020 | #1 largest, #19 most destructive wildfire event |
| Dixie | 2021 | #2 largest, #14 most destructive wildfire event |
| Mendocino Complex | 2018 | #3 largest wildfire event |
| Park | 2024 | #4 largest wildfire event |
| LNU Lightning | 2020 | #6 largest, #16 deadliest, #11 most destructive wildfire event |
| North Complex | 2020 | #7 largest, #5 deadliest, #5 most destructive wildfire event |
| Rush | 2021 | #11 largest wildfire event |
| Carr | 2018 | #14 largest, #15 deadliest, #9 most destructive wildfire event |
| Monument | 2021 | #15 largest wildfire event |
| Caldor | 2021 | #16 largest, #16 most destructive wildfire event |
| River Complex | 2021 | #18 largest wildfire event |



S-SV EMS Regional Disaster Management

S-SV EMS also manages the Regional Disaster Medical Health Coordination (RDMHC) Program for the 13 California OES Mutual Aid Region III counties (Butte, Colusa, Glenn, Lassen, Modoc, Plumas, Shasta, Sierra, Siskiyou, Sutter, Tehama, Trinity, and Yuba). This program consists of the Regional Disaster Medical Health Coordinator (RDMHC) and Regional Disaster Medical Health Specialist (RDMHS) staff, who assist the RDMHC in fulfilling the scope of work required by the California Emergency Medical Services Authority (EMSA) and California Department of Public Health (CDPH).



RDMHC/S staff work directly with the Medical Health Operation Area Coordinator (MHOAC) in each California OES Mutual Aid Region III County to provide medical/health system assistance during any type of emergency response/disaster, or as dictated by EMSA or CDPH. This includes all CDPH licensed healthcare facilities, public health agencies, LEMSAs, and any medical aspect of non-licensed healthcare facilities, such as evacuation shelters.

RDMHC/S staff act as the intermediary between the County and the State, as appropriate, for a variety of medical/health system needs, including development of regional medical preparedness/response plans, securing/overseeing regional emergency medical caches, medical resource requesting and fulfillment, coordinating EMS resources (ambulance strike teams, etc.), and other assistance requested by the MHOACs.

S-SV EMS Contact Information



S-SV EMS Agency Office Telephone Number: (916) 625-1702



S-SV EMS Agency Website: www.ssvems.com



S-SV EMS Agency Email Address: info@ssvems.com



S-SV EMS Agency 24/7 Duty Officer: (916) 625-1710



OES Region III RDMHC/S 24/7 Duty Officer: (916) 625-1709